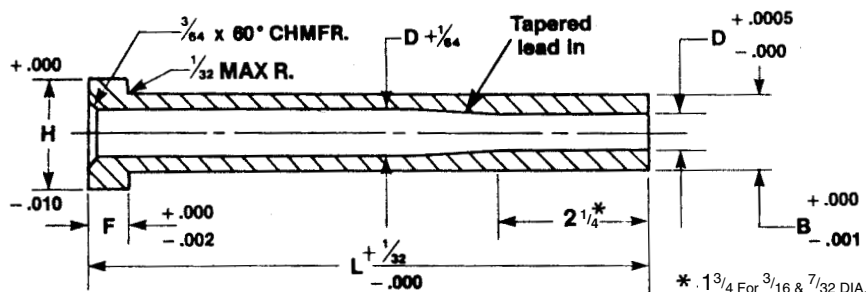


NITRIDED EJECTOR SLEEVES



Nitrided Ejector Sleeves are made of the finest grade of hot work die steel. The heads are hot-forged for strength. The outside surface is nitrided to a hardness of 64-74 Rockwell "C" and GROUND AFTER NITRIDING FOR STRAIGHTNESS AND FINISH. The bearing diameter is 300 Brinell and is finished, reamed and honed concentric with the O.D. of the sleeve.

B O.D.	D I.D.	H Head Dia.	F Head Thick.	List Price Each								
				L-4"	L-5"	L-6"	L-7"	L-8"	L-9"	L-10"	L-11"	L-12"
3/16	3/32	3/8	3/16	28.65	31.45	33.95	37.00	—	—	—	—	—
7/32	1/8	13.32	3/16	27.90	30.90	33.45	36.50	—	—	—	—	—
1/4	5/32	7/16	3/16	21.30	22.30	24.10	26.35	28.90	31.95	36.00	—	—
5/16	3/16	1/2	1/4	21.80	23.05	25.10	27.65	30.40	33.45	37.50	41.50	46.50
11/32	7/32	9/16	1/4	22.05	23.60	25.60	28.40	31.45	35.50	39.05	—	—
3/8	1/4	5/8	1/4	22.55	24.10	26.35	28.90	31.95	36.00	40.05	44.50	49.50
7/16	5/16	11/16	1/4	23.05	25.60	28.15	30.90	34.45	38.50	42.55	47.50	52.50
1/2	3/8	3/4	1/4	23.60	27.90	30.40	33.45	37.00	44.05	45.60	50.50	56.00
5/8	7/16	7/8	1/4	25.35	30.40	35.50	38.50	42.55	46.60	51.20	56.50	62.00
11/16	1/2	15/16	1/4	26.80	31.45	37.00	40.55	44.60	49.15	54.20	59.50	65.00
3/4	9/16	1	1/4	33.00	36.50	40.00	44.00	48.00	53.00	57.50	63.00	68.50
7/8	5/8	1 1/8	1/4	37.50	41.00	45.00	49.00	53.50	58.50	63.50	69.50	75.00
1"	3/4	1 1/4	1/4	41.50	45.50	49.50	54.00	58.50	64.00	69.50	75.00	81.50

OVERSIZE O.D. EJECTOR SLEEVES AVAILABLE

(+.005 over standard "B" dimension)

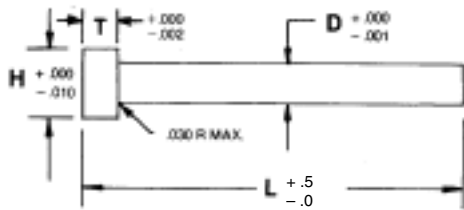
CALL FOR PRICING AND DELIVERY

WILLIAM T. HUTCHINSON CO.

TOLL FREE 1-800-544-7934 • 453 LEHIGH AVENUE • UNION, NEW JERSEY 07083-7926

EJECTOR PINS

NITRIDED EJECTOR PINS



- H13 Hot Work Die Steel
- Surface Hardness R/C 64-74
- Core Hardness R/C 35-40
- Forged and Annealed Heads
- Body Nitrided
- Honed Finish

STANDARD EJECTOR PINS

D Pin Dia.	H Head Dia.	T Head Thick.	Length			
			L-6"	L-10"	L-14"	L-18"
3/64	1/4	1/8	5.24	6.59	12.66	—
1/16	1/4	1/8	4.88	6.29	10.41	—
5/64	1/4	1/8	4.88	5.89	10.29	—
3/32	1/4	1/8	4.40	4.94	9.45	—
7/64	1/4	1/8	4.40	4.94	8.36	—
1/8	1/4	1/8	2.41	2.68	3.36	7.76
9/64	1/4	1/8	2.79	2.86	3.91	7.38
5/32	9/32	5/32	2.50	2.81	3.60	5.02
11/64	11/32	3/16	2.99	3.04	4.03	—
3/16	3/8	3/16	2.60	3.00	3.98	5.21
13/64	3/8	3/16	—	3.33	4.28	—
7/32	13/32	3/16	2.81	3.32	4.41	5.67
15/64	13/32	3/16	—	3.65	4.72	—
1/4	7/16	3/16	3.00	3.72	4.70	6.01
17/64	7/16	1/4	—	4.28	5.13	—
9/32	7/16	1/4	3.49	4.45	5.28	7.05
19/64	1/2	1/4	—	4.69	5.90	—
5/16	1/2	1/4	3.85	4.94	5.90	7.76
21/64	9/16	1/4	—	5.28	6.88	—
11/32	9/16	1/4	4.32	5.53	6.98	—
23/64	5/8	1/4	—	5.90	7.46	—
3/8	5/8	1/4	4.56	6.15	7.53	10.16
13/32	11/16	1/4	5.04	6.86	8.87	11.67
7/16	11/16	1/4	5.53	7.53	9.59	13.02
15/32	3/4	1/4	7.10	8.25	13.73	14.38
1/2	3/4	1/4	6.62	8.97	11.79	15.57
9/16	13/16	1/4	8.18	11.15	14.20	18.56
5/8	7/8	1/4	9.48	13.09	16.49	21.40
11/16	13/16	1/4	12.48	15.43	21.76	25.25
3/4	1"	1/4	13.20	17.72	22.57	28.88
7/8	1-1/8	1/4	28.90	33.99	57.74	81.55
1"	1-1/4	1/4	30.27	33.99	66.92	86.57

.005 OVERSIZE EJECTOR PINS

D .005 Over Std. Dia.	H Head Dia.	T Head Thick.	Length	
			L-10"	L-14"
3/64	1/4	1/8	8.72	—
1/16	1/4	1/8	7.33	—
5/64	1/4	1/8	7.33	—
3/32	1/4	1/8	6.43	—
7/64	1/4	1/8	6.43	8.44
1/8	1/4	1/8	3.02	3.58
9/64	1/4	1/8	6.14	—
5/32	9/32	5/32	3.15	3.98
11/64	11/32	3/16	6.19	—
3/16	3/8	3/16	3.37	4.26
13/64	3/8	3/16	6.62	—
7/32	13/32	3/16	3.73	—
15/64	13/32	3/16	6.42	—
1/4	7/16	3/16	4.05	5.20
17/64	7/16	1/4	6.47	—
9/32	7/16	1/4	4.56	—
19/64	1/2	1/4	6.86	—
5/16	1/2	1/4	5.04	6.56
21/64	9/16	1/4	6.90	—
11/32	9/16	1/4	5.72	—
23/64	5/8	1/4	7.03	—
3/8	5/8	1/4	6.38	8.24
13/32	11/16	1/4	7.60	—
7/16	11/16	1/4	7.82	10.48
15/32	3/4	1/4	8.53	—
1/2	3/4	1/4	9.39	12.51

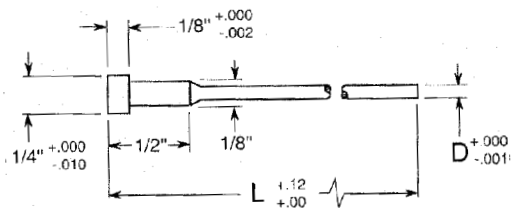
WILLIAM T. HUTCHINSON CO.

TOLL FREE 1-800-544-7934 • (908) 688-0533 • FAX (908) 688-8296 • ESTABLISHED 1927

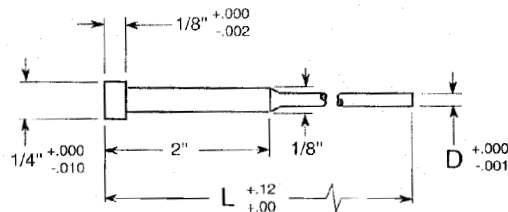
EJECTOR PINS

NITRIDED EJECTOR PINS — SHOULDER TYPE

Ejector pins are made from the best air hardening hot work die steel and heat treated for a tough core. The head is solid forged and annealed to prevent breakage. The body of the pin is nitrided to give a surface hardness of 64-74 Rockwell "C" then honed for a smooth friction free surface.



1/2" SHOULDER PINS



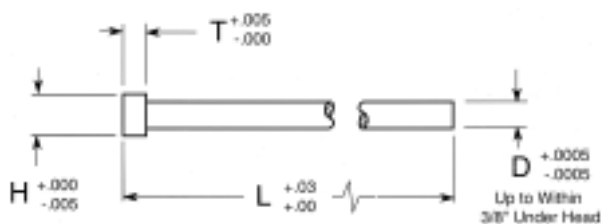
2" SHOULDER PINS

D Pin Dia.	LENGTH		
	6"	10"	14"
3/64	5.20	6.60	8.44
3/64 O.S.*	—	7.27	—
1/16	4.94	6.17	7.95
1/16 O.S.*	—	6.87	—
5/64	4.94	6.17	8.05
5/64 O.S.*	—	6.87	13.00
3/32	4.43	5.61	7.63
3/32 O.S.*	—	6.30	12.90
7/64	4.43	5.61	6.30
7/64 O.S.*	—	6.30	12.83

O.S.*
Pin Diameter is .005
over standard
diameter

D Pin Dia.	LENGTH		
	6"	10"	14"
3/64	5.07	5.84	8.18
3/64 O.S.*	—	7.01	—
1/16	4.89	5.89	7.51
1/16 O.S.*	—	6.59	—
5/64	4.89	5.89	7.65
5/64 O.S.*	—	6.59	13.00
3/32	4.23	5.30	7.33
3/32 O.S.*	—	6.01	12.90
7/64	4.23	5.30	7.17
7/64 O.S.*	—	6.01	12.83

ECONOMY EJECTOR PINS



- Oil Hardening Tool Steel
- Hardness R/C 58/60
- Heads Annealed R/C 42/45
- Ground O.D. ± .0005

BODY DIA (D)	HEAD DIA (H)	HEAD THICK (T)	PRICE EACH		
			4"	6"	10"
1/16	7/64	3/64	2.75	3.48	—
5/64	9/64	3/64	2.55	3.22	—
3/32	5/32	5/64	2.48	3.11	—
7/64	3/16	5/64	2.55	3.19	—
1/8	7/32	3/32	2.25	2.80	3.72
9/64	1/4	7/64	2.25	2.80	3.72
5/32	17/64	1/8	2.25	2.80	3.72
11/64	5/16	1/8	2.34	2.92	3.81
3/16	5/16	9/64	2.34	2.92	3.81
13/64	11/32	5/32	2.54	2.99	3.93

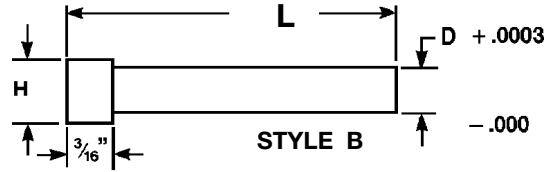
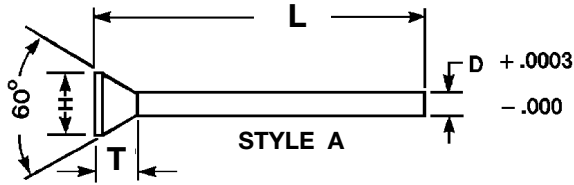
BODY DIA (D)	HEAD DIA (H)	HEAD THICK (T)	PRICE EACH		
			4"	6"	10"
7/32	3/8	5/32	2.73	3.19	4.12
15/64	13/32	11/64	2.80	3.39	4.24
1/4	7/16	3/16	2.80	3.39	4.24
17/64	7/16	1/4	3.29	3.56	4.33
9/32	7/16	1/4	3.29	3.56	4.33
19/64	1/2	1/4	3.48	3.68	4.53
5/16	1/2	1/4	3.48	3.68	4.53
21/64	9/16	1/4	3.57	3.86	5.07
11/32	9/16	1/4	3.57	3.86	5.07
23/64	5/8	1/4	3.68	4.05	5.48
3/8	5/8	1/4	3.68	4.05	5.48

WILLIAM T. HUTCHINSON CO.

TOLL FREE 1-800-544-7934 • 453 LEHIGH AVENUE • UNION, NEW JERSEY 07083-7926

HIGH SPEED STEEL PUNCHES

Hutchinson High Speed Steel Punches are manufactured from the finest quality AISI type M-2 high speed steel, heat treated and tempered to Rockwell C 60-62, then precision ground to uniform close tolerances.



Set-Up Charges (Shaded area only)

2 1/2" - 4" = 30.00

6" - 8" = 35.00

Dia. "D" Increment of .001	H	T	2 1/2"		3 1/2"	4"	6"	8"
.010 - .014	1/32	1/16	2" 4.49	5.40	7.17	9.96	—	—
.015 - .019	1/32	1/16	2" 3.70	4.49	6.19	8.95	—	—
.020 - .029	3/64	1/16	2" 2.99	3.62	5.40	8.16	—	—
.030 - .036	1/16	1/16	2.49	4.97	7.37	—	—	
.037 - .046	5/64	1/16	2.49	4.97	6.82	12.49	20.51	
.047 - .055	3/32	5/64	2.49	4.12	6.40	11.99	19.17	
.056 - .064	7/64	5/64	3.02	3.85	5.93	10.81	18.88	
.065 - .078	1/8	5/64	3.02	3.85	5.93	10.81	18.12	
.079 - .087	9/64	3/32	3.02	3.85	5.93	10.81	17.41	
.088 - .099	5/32	3/32	3.34	4.19	5.49	10.30	15.79	
.100 - .120	11/64	3/32	3.34	4.19	5.49	10.30	15.79	
.121 - .131	3/16	3/32	3.34	4.19	5.49	10.30	15.79	
.132 - .147	13/64	3/32	3.58	4.41	5.71	10.61	16.18	
.148 - .163	7/32	3/32	3.58	4.41	5.71	10.61	16.18	
.164 - .179	15/64	3/32	3.58	4.41	5.71	10.61	16.18	
.180 - .194	1/4	3/32	4.07	5.01	6.23	11.13	16.69	
.195 - .210	17/64	3/32	4.07	5.01	6.23	11.13	16.69	
.211 - .225	9/32	3/32	4.07	5.01	6.23	11.13	16.69	
.226 - .241	19/64	3/32	4.81	5.70	6.91	11.97	17.78	
.242 - .257	5/16	3/32	4.81	5.70	6.91	11.97	17.78	
.258 - .272	21/64	3/16	4.81	5.70	6.91	11.97	17.78	
.273 - .288	11/32	3/16	4.81	5.70	6.91	11.97	17.78	
.289 - .304	23/64	3/16	5.35	6.31	7.45	13.03	19.09	
.305 - .320	3/8	3/16	5.35	6.31	7.45	13.03	19.09	
.321 - .336	25/64	3/16	5.35	6.31	7.45	13.03	19.09	
.337 - .352	13/32	3/16	5.80	6.73	7.83	13.50	19.54	
.353 - .368	27/64	3/16	5.80	6.73	7.83	13.50	19.54	
.369 - .375	7/16	3/16	5.80	6.73	7.83	13.50	19.54	
.376 - .436	D +.06 +.09	3/16	7.02	8.32	9.57	15.26	21.39	
.437 - .484		3/16	7.97	9.85	11.19	17.02	23.22	
.485 - .562		3/16	8.95	11.50	12.50	17.86	24.15	
.563 - .625		3/16	10.17	13.48	14.66	20.05	26.34	
.626 - 1.000			QUOTED ON REQUEST					

WHEN ORDERING, SPECIFY STYLE, DIA. AND LENGTH
SEE PAGE 39 FOR CONVENIENT QUOTATION REQUEST FORM
FOR SPECIAL STYLE A AND STYLE B PUNCHES

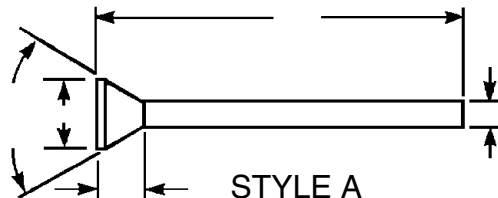
WILLIAM T. HUTCHINSON CO.

TOLL FREE 1-800-544-7934 • (908) 688-0533 • FAX (908) 688-8296 • ESTABLISHED 1927

STEEL PUNCHES

QUOTATION REQUEST FORM

For special Style A and Style B punches, copy and fax to: (908) 688-8296



MATERIAL

HARDNESS
R/C

QUANTITY

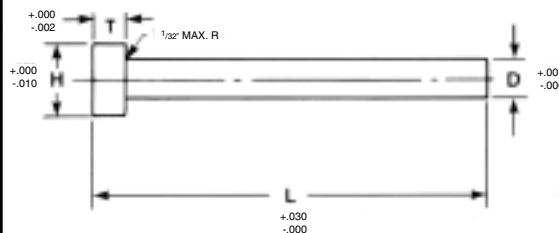
PLEASE INCLUDE ALL TOLERANCES AND CONCENTRICITY REQUIREMENTS

FROM: _____ PHONE: _____

COMPANY: _____ FAX: _____

CORE PINS

D PIN DIA	H HEAD DIA	T HEAD THICK.	STANDARD HARDNESS PRICE EACH			HIGH HARDNESS PRICE EACH		
			3"	6"	10"	3"	6"	10"
3/32	1/4	1/8	5.09	5.26	6.09	5.38	5.62	6.62
7/64	1/4	1/8	5.26	5.44	6.44	5.56	5.73	6.91
1/8	1/4	1/8	3.20	3.25	4.31	3.37	3.55	4.56
9/64	1/4	1/8	3.20	3.31	4.31	3.37	3.67	4.56
5/32	9/32	5/32	3.26	3.37	4.38	3.55	3.67	4.56
11/64	11/32	3/16	3.26	3.37	4.55	3.60	3.73	4.85
3/16	3/8	3/16	3.31	3.42	4.62	3.60	3.84	4.85
13/64	3/8	3/16	3.37	3.55	4.67	3.67	3.91	5.02
7/32	13/32	3/16	3.44	3.67	4.85	3.73	3.96	5.02
1/4	7/16	3/16	3.73	3.91	5.20	4.02	4.26	5.44
9/32	7/16	1/4	4.08	4.26	5.67	4.44	4.67	6.09
5/16	1/2	1/4	4.55	4.67	6.27	4.91	5.09	6.74
11/32	9/16	1/4	4.91	5.09	6.74	5.33	5.62	7.45
3/8	5/8	1/4	5.44	5.67	7.45	5.85	6.15	8.16
13/32	11/16	1/4	5.85	6.09	8.09	6.27	6.68	8.87
7/16	11/16	1/4	6.51	6.68	8.87	6.98	7.33	9.75
15/32	3/4	1/4	6.98	7.33	9.69	7.56	7.98	10.69
1/2	3/4	1/4	7.20	7.92	10.40	8.16	8.63	11.52
9/16	13/16	1/4	—	9.27	12.35	—	10.11	13.47
5/8	7/8	1/4	—	11.05	14.47	—	11.82	15.96
3/4	1"	1/4	—	15.07	19.74	—	16.31	21.86

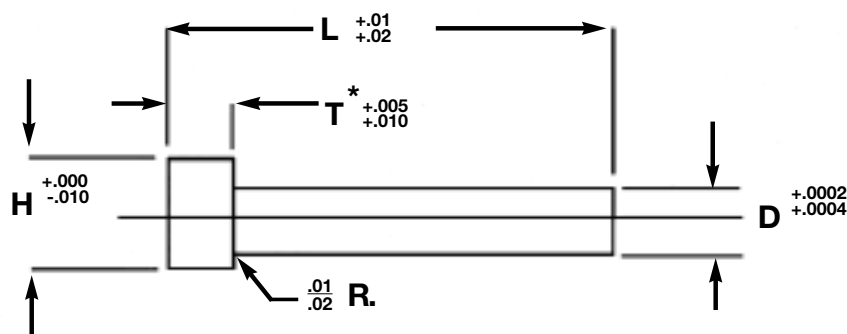


- Standard Hardness R/C 30 - 35
- High Hardness R/C 50 - 54
- Air Hardening Hot Work Die Steel
- Precision Ground After Heat Treating
- Heads Forged and Annealed

WILLIAM T. HUTCHINSON CO.

TOLL FREE 1-800-544-7934 • 453 LEHIGH AVENUE • UNION, NEW JERSEY 07083-7926

PUNCH BLANKS



*OPTIONAL T, A-2 AND M-2 ONLY

Body Diameter D	Diameter H	T*	L Length 1/4" Increments	Price				
				A-2	M-2	D-2	PM M-4	PM 10V
1/8	1/4	1/8 (3/16)	1 1/4 - 3	7.29	8.42	8.66	10.87	12.16
3/16	5/16	1/8 (3/16)	1 1/4 - 3 1/2	7.36	8.96	9.23	11.90	14.73
1/4	3/8	3/16 (1/8)	1 1/4 - 3 1/2	7.56	9.17	9.44	12.48	14.98
5/16	7/16	3/16 (1/8)	1 1/4 - 4	7.74	9.65	9.94	13.55	16.48
3/8	1/2	3/16 (1/8)	1 1/4 - 4	8.12	10.20	10.51	14.77	18.45
7/16	9/16	3/16	1 1/4 - 4	9.78	12.39	12.77	18.02	22.60
1/2	5/8	3/16	1 1/4 - 4	10.35	13.53	13.94	19.57	25.46
5/8	3/4	3/16 (1/4)	1 1/4 - 4	13.16	17.72	18.25	25.95	34.27
3/4	7/8	3/16 (1/4)	1 1/4 - 4	18.93	24.21	24.94	35.33	45.39
1	1 1/8	3/16 (1/4)	1 1/4 - 4	29.65	38.84	40.01	56.55	73.74

EXTRA LONG 6" AND 8"

Body Diameter D	Diameter H	Head Thickness T	Price			
			6"		8"	
			A-2	M-2	A-2	M-2
1/8	1/4	1/8	12.75	14.71	16.96	19.58
3/16	5/16	1/8	12.88	15.67	17.12	20.84
1/4	3/8	3/16	13.22	16.04	17.44	21.33
5/16	7/16	3/16	13.54	16.89	18.01	22.47
3/8	1/2	3/16	14.22	17.87	18.92	23.74
7/16	9/16	3/16	17.11	21.70	22.76	28.85
1/2	5/8	3/16	18.12	23.68	24.08	31.49
5/8	3/4	3/16	23.03	31.01	30.64	41.24
3/4	7/8	3/16	33.13	39.61	44.06	56.35
1"	1 1/8	3/16	51.87	67.95	68.98	90.38

M-2 R/C 60-62 D-2 R/C 61-63
 A-2 R/C 60-62 PM-M4 R/C 61-63
 PM-10V R/C 61-63

WILLIAM T. HUTCHINSON CO.

TOLL FREE 1-800-544-7934 • (908) 688-0533 • FAX (908) 688-8296 • ESTABLISHED 1927